

Yn y Lwp!

("In the loop")

Ysgol Cwm Brombil's Weekly Bulletin

In this edition:

- YCB Gardens
- Urdd Eisteddfod
- Year 11 Exam Schedule;

Summer Term / Tymor y Haf

Half Term : Monday 26th May - Friday 30th May /
Hanner Tymor: Dydd Llun Mai 26 – Dydd Gwener Mai 30
End / Diwedd: Friday 18th July 2025 / Dydd Gwener 18 Gorffennaf 2025

Week Beginning – Monday 9th June 2025 – Week 2

Monday	GCSE Exams	Year 7,8 & 9 French Trip
Tuesday		
Wednesday		
Thursday		
Friday		

Week Beginning - Monday 16th June 2025 – Week 1

Monday	GCSE EXAMS	
Tuesday		
Wednesday		
Thursday		
Friday		



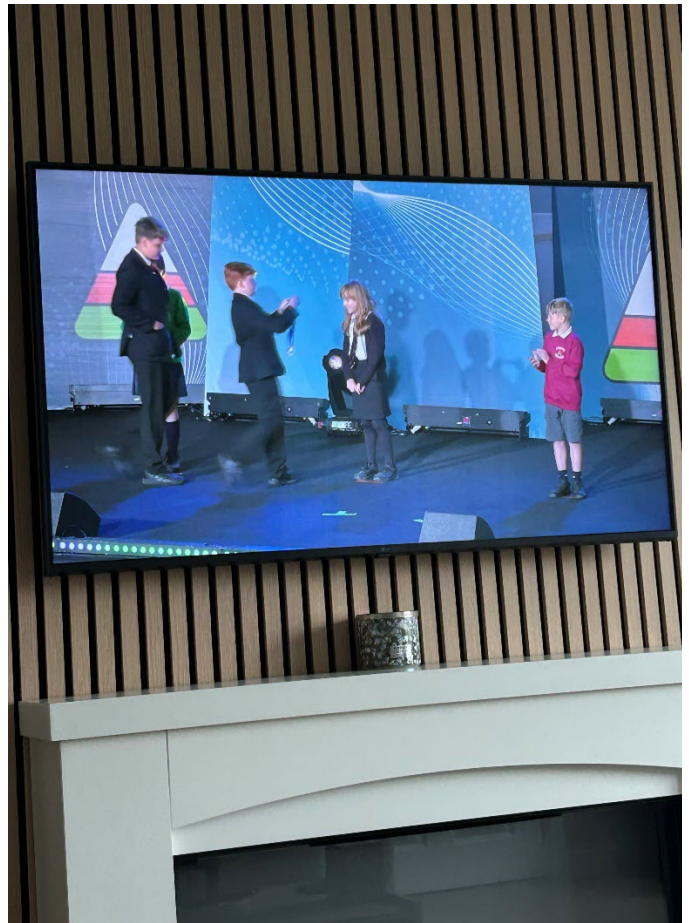
Year 11 GCSE Exam Timetable

Date	Start	Length	Component Code	Exam
Mon 09 Jun	09:00	01:45	3400U10-1	Biology Unit 1 Foundation: Written
Mon 09 Jun	09:00	01:45	3400UA0-1	Biology Unit 1 Higher: Written
Mon 09 Jun	09:00	01:15	3430U10-1	Science Double Unit 1 Foundation
Mon 09 Jun	09:00	01:15	3430UA0-1	Science Double Unit 1 Higher
Mon 09 Jun	13:00	01:00	98110001	Constructing Built Environment Unit 1
Tue 10 Jun	09:00	00:35	3810U20-1	Spanish Unit 2 Foundation: Listening
Tue 10 Jun	09:00	01:00	3810U30-1	Spanish Unit 3 Foundation: Reading
Tue 10 Jun	09:00	00:45	3810UB0-1	Spanish Unit 2 Higher: Listening
Tue 10 Jun	09:00	01:15	3810UC0-1	Spanish Unit 3 Higher: Reading
Tue 10 Jun	09:00	01:20	5259UB0-1	Sport & Coaching Unit 1: Paper
Tue 10 Jun	13:00	01:15	3100UJ0-1	History Unit 3A: Written
Wed 11 Jun	09:00	01:30	3300U20-1	Maths UNIT2 Foundation Calculator
Wed 11 Jun	09:00	01:45	3300U60-1	Maths UNIT2 Higher Calculator
Wed 11 Jun	09:00	01:45	3300U40-1	Maths UNIT2 Intermediate Calculator
Thu 12 Jun	13:00	01:20	5409UB0-1	Hosp & Catering Unit 1: Paper
Thu 12 Jun	13:00	01:25	1RU0 4H	Russian Writing (H)
Fri 13 Jun	09:00	01:45	3410U10-1	Chemistry Unit 1 Foundation: Written
Fri 13 Jun	09:00	01:45	3410UA0-1	Chemistry Unit 1 Higher: Written
Fri 13 Jun	09:00	01:15	3430U20-1	Science Double Unit 2 Foundation
Fri 13 Jun	09:00	01:15	3430UB0-1	Science Double Unit 2 Higher
Mon 16 Jun	09:00	01:45	3420U10-1	Physics Unit 1 Foundation: Written
Mon 16 Jun	09:00	01:45	3420UA0-1	Physics Unit 1 Higher: Written
Mon 16 Jun	09:00	01:15	3430U30-1	Science Double Unit 3 Foundation
Mon 16 Jun	09:00	01:15	3430UC0-1	Science Double Unit 3 Higher
Mon 16 Jun	13:00	01:00	3660U30-1	Music Unit 3 Appraising
Tue 17 Jun	09:00	01:15	3810U40-1	Spanish Unit 4 Foundation: Writing
Tue 17 Jun	09:00	01:30	3810UD0-1	Spanish Unit 4 Higher: Writing
Tue 17 Jun	09:00	02:30	95500001	Additional Maths Written Paper
Tue 17 Jun	13:00	01:30	3560UA0-1	Food & Nutrition Unit 1 Written
Wed 18 Jun	09:00	02:00	3603U10-1	D & T (Product design) UNIT1 D & T in 21st Cen

Urdd Eisteddfod



Huge llongyfarchiadau to Freya, Tilly, Lacey and Matthew for competing in the Urdd Eisteddfod and coming third. Another special thank you to the members of Criw Cymraeg who volunteered their time during their holidays to help give out the medals in the Eisteddfod. They represented the school amazingly and did us proud. Da iawn chi!



YCB Gardens

A huge thank you to everyone who joined us for our Forest School sessions this half term at Ysgol Cwm Brombil!

From pizza making and marshmallow toasting to tool use, games, salad harvesting – it was a fantastic day of adventure and outdoor play.

Thanks to your support, we raised £130 for our school garden fund! Every penny will go back into creating more Outdoor Learning opportunities for our pupils.

We can't wait to do it all again soon!



Ysgol Cwm Brombil Social Media Accounts

You can keep up to date with so many things that go on every day at Ysgol Cwm Brombil by following our school Instagram: We also have Instagram account of other departments and clubs in in our school. Why not follow some of our accounts and give them likes!



[Ysgolcwmbrombil](#)



[YCB Cymraeg](#)



[YCB DofE](#)

[YCB Garden](#)



[YCB Geography](#)



[YCB GivingClub](#)



[YCB HealthWell](#)

[YCB Internationclub](#)



[YCB Mfl](#)



[YCB PE](#)



[YCB Performingarts](#)

[YCB Primary](#)



[YCB Religiousstudies](#)



[YCB Science](#)



[YCB Skiing](#)

BENEFITS OF REGULAR PHYSICAL ACTIVITY

Aim for an average of at least 60 minutes of moderate or vigorous intensity physical activity a day across the week



BOOSTS COGNITIVE FUNCTION

improves memory, focus and enhances productivity and creativity

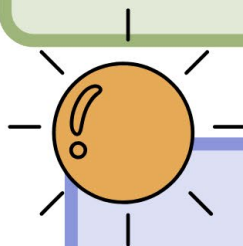
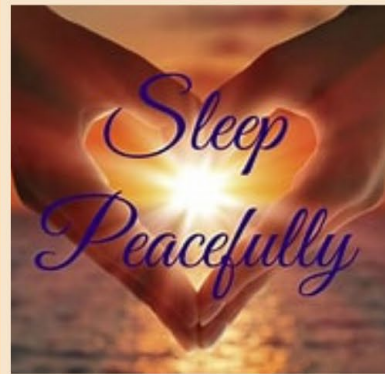


IMPROVES MOOD

Reduces stress and anxiety promoting mental well being

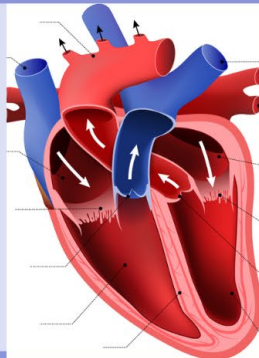


AIDS SLEEP QUALITY



ENHANCES PHYSICAL HEALTH

Strengthens bones and muscles; protects against osteoporosis and fractures



PROMOTES HEART HEALTH

Lowers the risk of heart disease; stroke and diabetes

Attendance Information



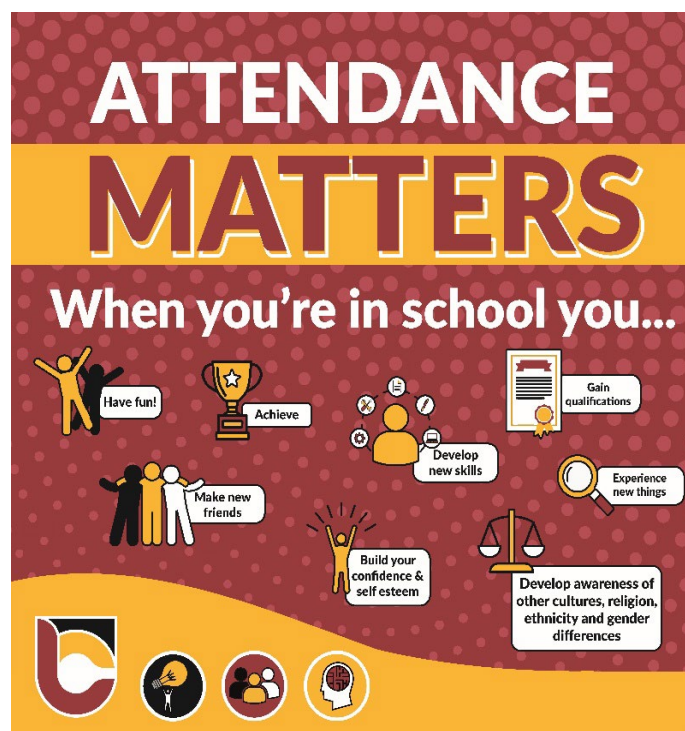
Our attendance target for all students is 100% and our **minimum expectation is 95%**. The infographic above shows the impact of days missed and minutes late can have on a child's learning.

For example:

- If a child is **late to school just 5 minutes** each day, throughout the year that equates to **3 days lost to learning (15 hours)**.
- Attendances of **97%** allows for one day of absence per half term and results in **30 hours lost to learning**

Important Reminders:

1. Parents **MUST** contact school to report any absences on **01639 760110 before 8.30 am**.
2. Parents should contact the school **each day** that a pupil is not attending.
3. If the school are not notified, then **you will be contacted** by a member of the Attendance team to find out why your child is not in school.
4. If your child is not notified of the reason for the absence it will be recorded as **unauthorised absence**.
5. If there are three unauthorised absences in a row, the Safeguarding Lead and Education Welfare Officer will be made aware to ensure that your child is safe.
6. You will be required to produce medical evidence if you state that your child is ill for 3 or more consecutive days.
7. We will ask the school Healthcare Professional to contact you if there is an absence of more than 2 weeks.
8. Term time leave will only be granted by the headteacher on request.
9. Where possible, **all appointments should be made outside of the school day**.



School Uniform Expectations

All students are expected to wear school uniform throughout the school day.
Below are uniform guidelines for both boys and girls, as well as PE Kit:

All pupils Year 7 to 11		
Blazer	Black school blazer	Available from Bergoni. Blazers must be brought to school and worn every day.
Shirt	White shirt with collar.	Can be purchased from any retailer.
Trousers	Plain black tailored uniform style trousers.	Jean style, corduroys, skinny or casual trousers are not permitted.
Skirt *	Plain black school uniform style skirt.	Skirts should be an appropriate length.
Tights	Plain black tights	Tights are to be worn with skirts and can be purchased from any retailer.
Shoes	Black shoes with black laces.	Available from any retailer. Black leather converse shoes are permitted. NO TRAINERS
Tie	School tie.	Available from Bergoni.
Jumper	Black with badge.	Available from Bergoni. Jumpers are optional.
Shorts	Black tailored shorts.	Only for the summer term. Not PE shorts.
Outdoor coat/Jacket	Coats should be waterproof and black in colour.	Available from any retailer.
Socks (only if not wearing tights)	Ankle height, plain black or white.	Available from any retailer.
Please note hoodies are <u>not</u> allowed in school. Any pupil who refuses to remove them during the day will have them confiscated.		
Physical Education		
Unisex T Shirt	Available exclusively from Bergoni	
Rugby Jersey	Available exclusively from Bergoni	
Shorts	Available exclusively from Bergoni	
Socks	Available exclusively from Bergoni	
Unisex ¼ zipped top	Optional item. Available exclusively from Bergoni	
Plain black tracksuit bottoms	Optional available at any retail store	
Skort or Legging (recommended to go a size bigger than your normal clothes size as they are smaller sizes.)	Available exclusively from Bergoni	
Please note, even on PE days, hoodies are not allowed in school. Pupils are expected to wear a long sleeve PE top when cold.		

For further information regarding our uniform expectations please see our [school website](#):

The Pantry

Our weekly food bank is open every Thursday from 3.15. This is available to anyone within our school community, no referral needed, please just drop in as and when needed.

We all need a little help sometimes. Entrance to the Food Bank – The Pantry is accessed via the pupil entrance in the senior phase school, inside the canteen area.

Refreshments will be provided for everyone waiting, we look forward to seeing you, please remember to bring your bags with you.



Donations

We are always grateful for any donations that you can provide towards our food bank, we always need the below items. There is a drop off trolley in reception:

- Tinned Goods:
 - Meats – hotdogs, minced beef, pies, meatballs, curries etc.
 - Beans
 - Beans and Sausage
 - Spaghetti
 - Tinned Veg
 - Potatoes,
 - carrots,
 - peas,
 - sweetcorn
 - Tuna
 - Tinned fruits
- Cereal
- UHT Milk
- Pasta – including sauces
- Toiletries
 - Shampoo,
 - Shower gel,
 - Conditioner,
 - Toothpaste
 - Toilet rolls

*Please NO sanitary products, we have lots in stock



THANK YOU FOR YOUR SUPPORT

Brombil Barracks

Brombil Barracks is a welcoming support group at Ysgol Cwm Brombil for service children. Welsh Government define service children as:

A 'Service child' has parent(s) or person(s) exercising parental responsibility who is/are Service personnel serving:



- *In HM Regular or Reserve Armed Forces – Royal Navy and Royal Marines; British Army and Royal Air Force,*
- *Or- Is an Armed Forces Veteran who has been in Service within the past two years,*
- *Or - One of their parents died whilst serving in the Armed Forces and the learner has received a pension under the Armed Forces Compensation Scheme or the War Pensions Scheme.*

If your child falls into this category and we are not aware please contact the school to inform us so we can provide appropriate provisions. Please find useful links and tools below to support your service children at home. We would encourage you to share any future deployments with us and if deployed parents require communication from staff regarding pupil progress please contact us and we can accommodate this. Mrs Stanton (B12) and Mrs Sims (B14) are available for pupils drop ins at any time.



SSCE Monthly Bulletin:

[SSCE Cymru :: Monthly school bulletin](#)

SSCE Family Guide:

[SSCE Cymru Service family guide](#)

Little Troopers at home:

[Little Troopers at Home - Little Troopers](#)

Further support for service children with ALN:

Education Advisory Team (EAT)

X accounts:

@SSCECymru

@LittleTroopers

Future Military Opportunities:

[Motivational Preparation College for Training \(MPCT\)](#)

[The Reserve Forces' and Cadets' Association \(RFCA\) for Wales](#)

Term dates for 2024-25

Autumn Term, half term 1 2024-25	
Tuesday 3 rd September 2024	Year 7 & 11 attend school
Wednesday 4 th September 2024	All pupils attend school
Friday 25 th October 2024	Last Day of half term 1
Half Term holiday - Monday 28 th October 2024 – Friday 1 st November 2024	
Autumn Term, half term 2 2024-25	
Monday 6 th November 2024	Term starts
Friday 29 th November 2024	Staff INSET (Training) Day
Monday 2 nd December 2024	Staff INSET (Training) Day
Friday 20 th December 2024	Last Day of half term 2
Christmas Holiday – Monday 23 rd December 2024 – Friday 3 rd January 2025	
Spring Term, half term 3 2024-25	
Monday 6 th January 2025	Half term 3 Starts for all pupils
Monday 17 th February	Staff INSET (Training) Day
Friday 21 st February 2025	Last Day of half term 3
Half Term holiday - Monday 24 th February 2025 – Friday 28 th February 2025	
Spring Term, half term 4 2024-25	
Monday 3 rd March 2025	Term 4 Starts
Friday 11 th April 2025	Last Day of half term 4 for pupils
Easter holiday - Monday 14 th April 2025 - Friday 25 th April 2025	
Summer Term, half term 5 2024-25	
Monday 28 th April 2025	Term 5 Starts
Monday 5 th May 2025	May Day Bank Holiday
Thursday 22 nd May 2025	Last Day of half term 5
Friday 23 rd May 2025	Staff INSET (Training) Day
Half Term - Monday 26 th May 2025 - Friday 31 st May 2025	
Summer Term Half term 6 2024-25	
Monday 2 nd June 2025	Half term 6 Starts
Friday 18 th July 2025	Last Day of half term 6 & End of school Year

